

1. Do not scale from this drawing. If in doubt ask.
2. Contractor to check all dimensions on site prior to the commencement of works and report any discrepancies to the Architect immediately.
3. To be read in conjunction with all other drawings, bills and specification documents.
4. Cross refer to structural engineers design for all structural information.

3 Bedroom Apartment
95.23 m2
1025 sq.ft.
to adaptable wheelchair standard DG/Res 2

3 Bedroom Apartment
97.77 m2
1052 sq.ft.
to adaptable wheelchair standard DG/Res 2

2 Bedroom Apartment
65.78 m2
708 sq.ft.
to adaptable wheelchair standard DG/Res 2

2 Bedroom Apartment
65.31 m2
703 sq.ft.
to adaptable wheelchair standard DG/Res 2

2 Bedroom Apartment
75.21 m2
810 sq.ft.
to adaptable wheelchair standard DG/Res 2

2 Bedroom Apartment
65.31 m2
703 sq.ft.
to adaptable wheelchair standard DG/Res 2

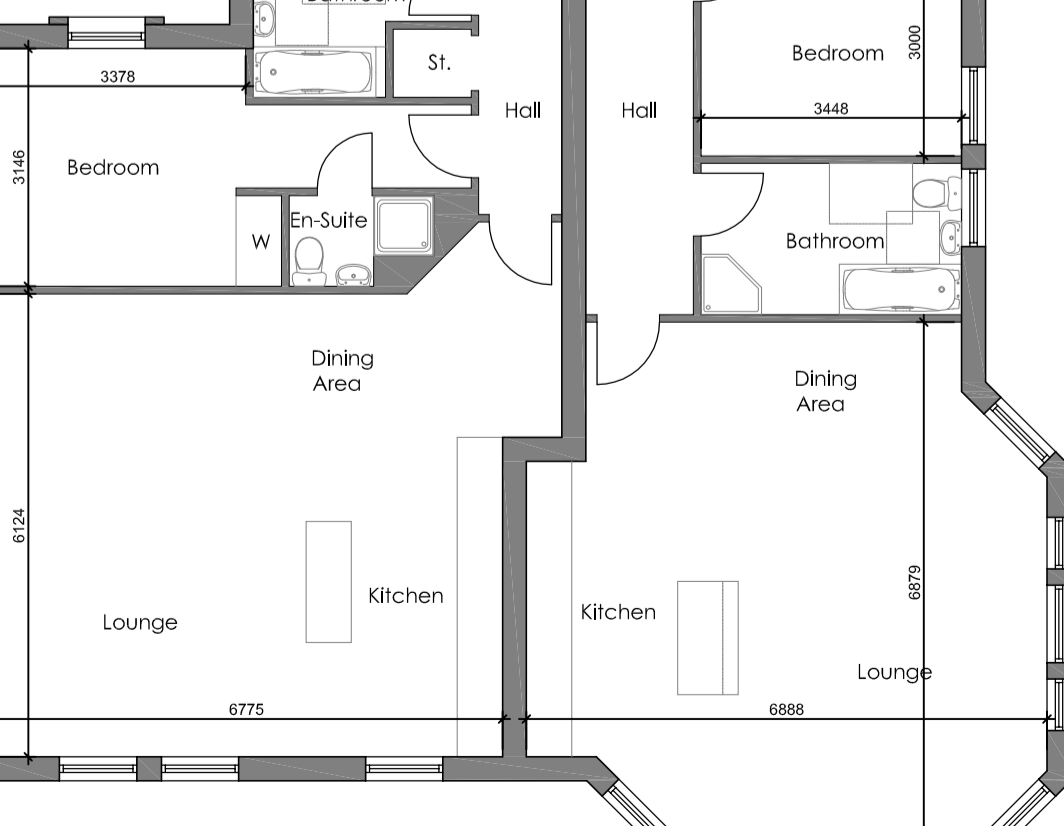
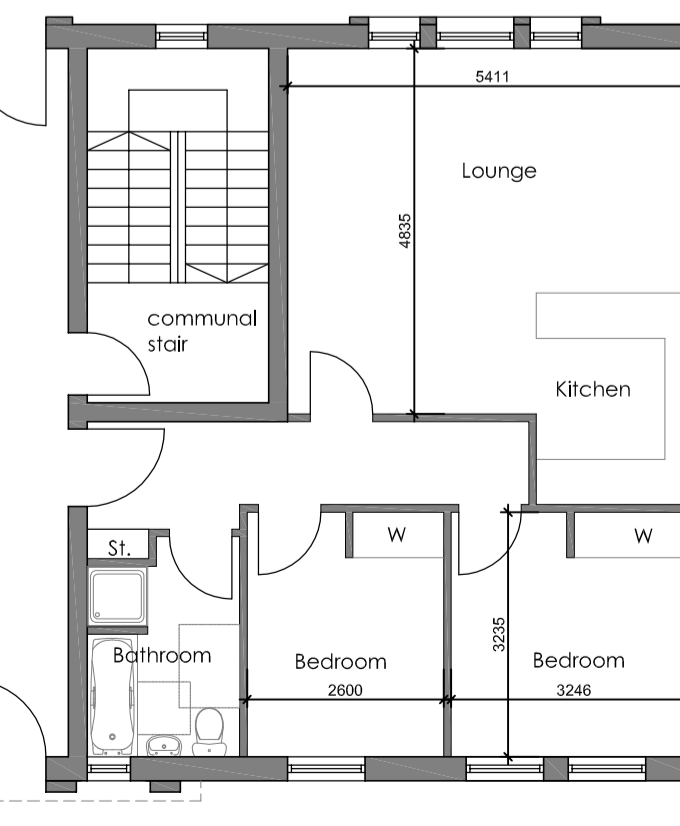
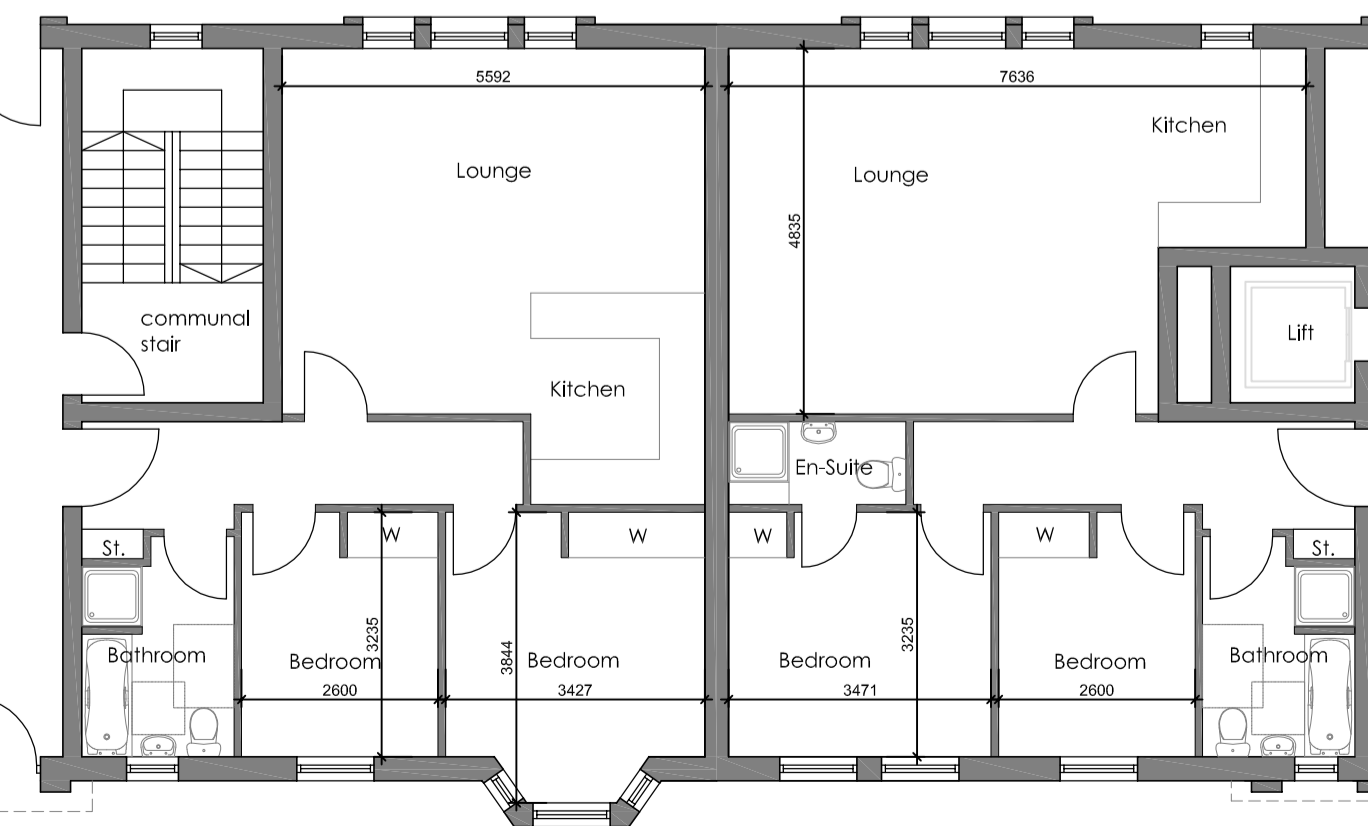
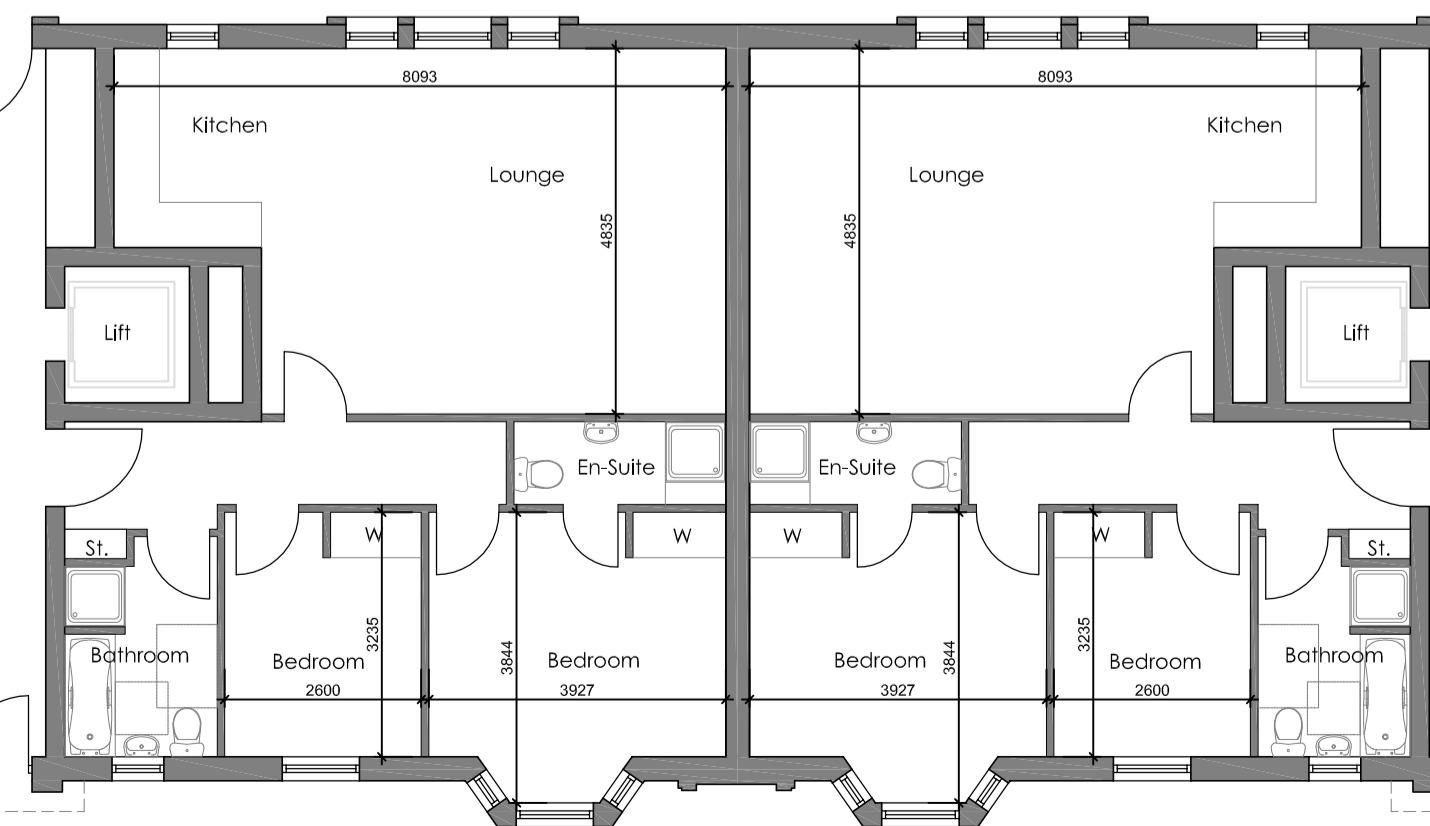
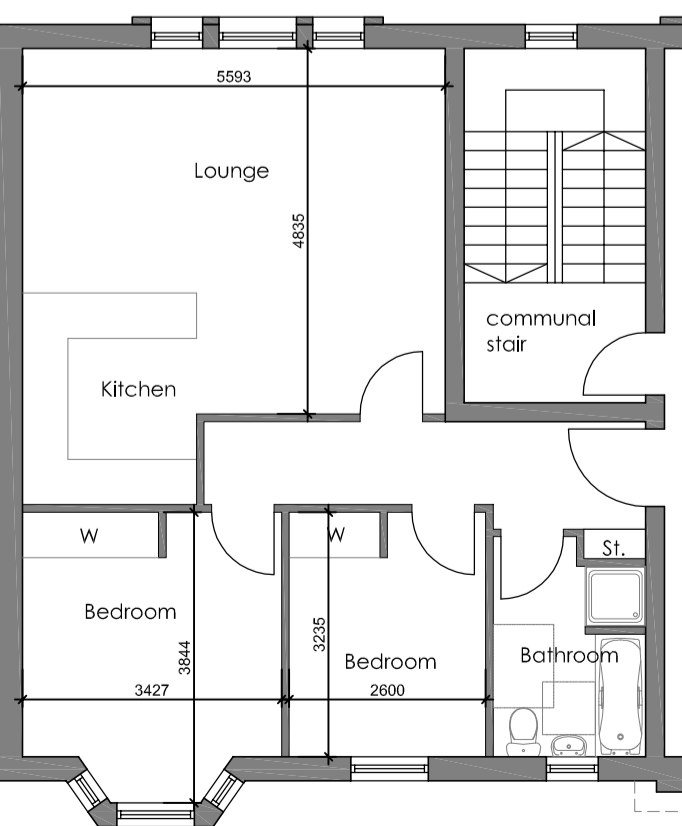
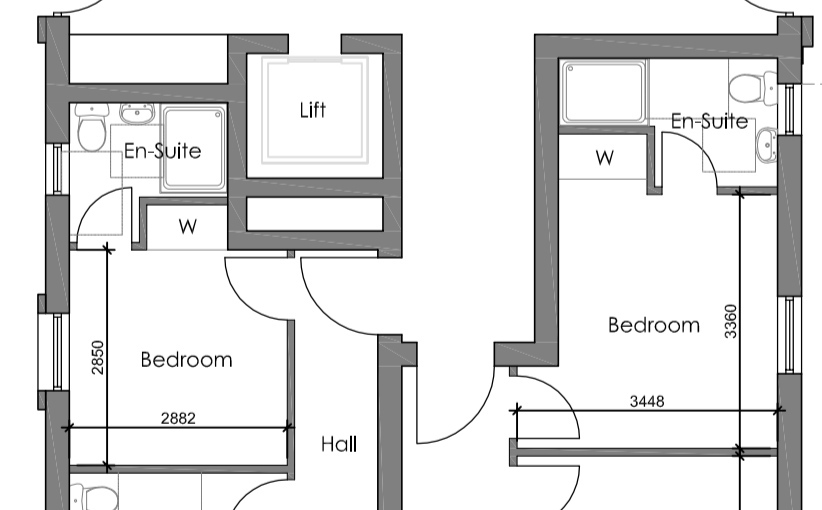
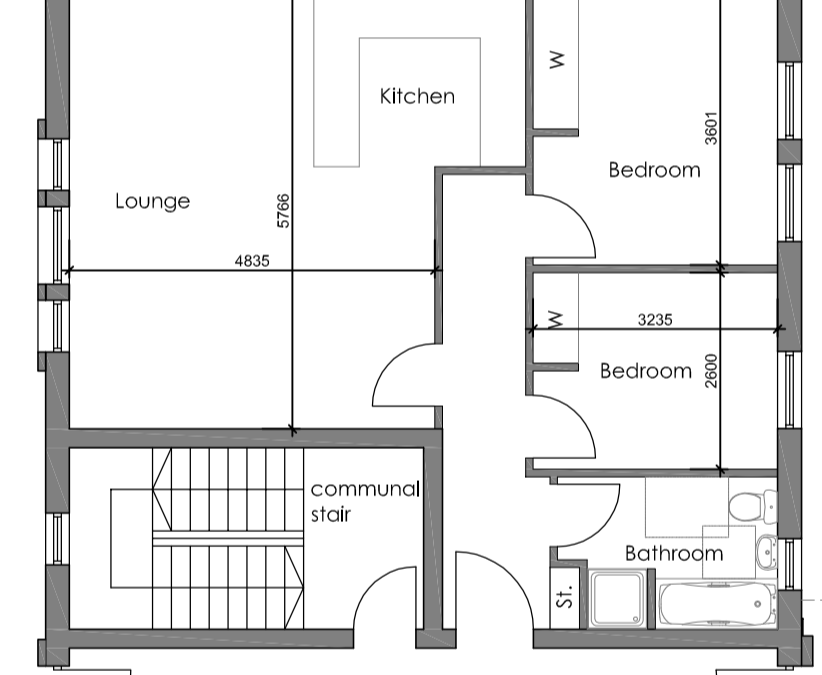
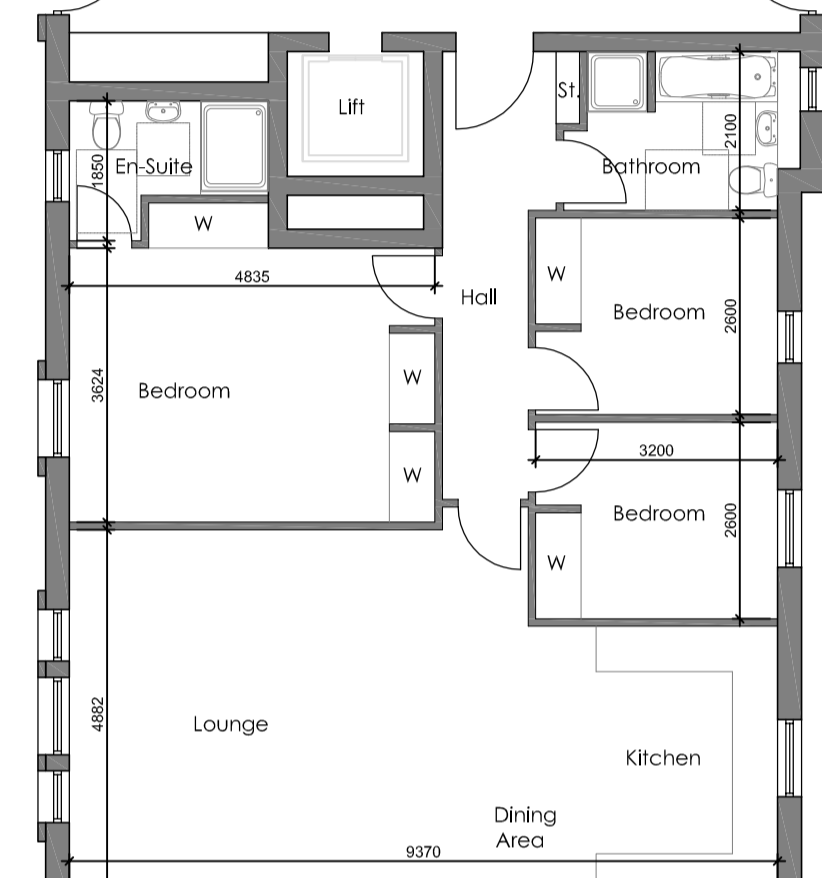
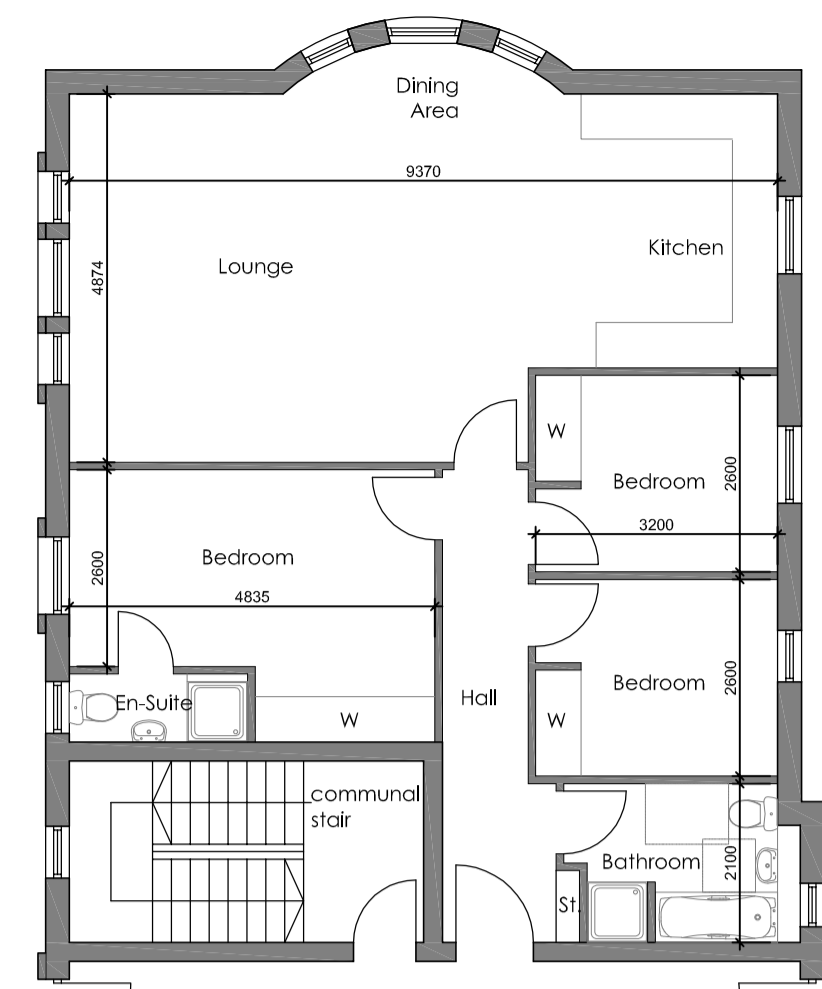
2 Bedroom Apartment
75.21 m2
810 sq.ft.
to adaptable wheelchair standard DG/Res 2

2 Bedroom Apartment
69.95 m2
753 sq.ft.
to adaptable wheelchair standard DG/Res 2

2 Bedroom Apartment
62.46 m2
672 sq.ft.
to adaptable wheelchair standard DG/Res 2

2 Bedroom Apartment
89.18 m2
960 sq.ft.

2 Bedroom Apartment
85.69 m2
922 sq.ft.



rev.	date	description
A	08.12	Planning Update

13 Newton Place
Glasgow
G3 7PR

New City Vision
Our vision. Your future

Project: Clouston Street

Drawing: Apartments Ground Floor Plan

Scale: 1:100@A1 Package: Planning Issue Date: 23.04.2012

Development: Clouston St Job No: 0059

Drawing Number: AL(0)200 Revision: A

Status: Planning